

The Integrated Memory Care Clinic Team

The IMCC care team consists of nurse practitioners, collaborating physicians, a registered nurse, social worker, a patient care coordinator, and more.

The team will develop an individualized plan of care with treatment recommendations. Patient education, potential and actual barriers to treatment goals, caregiver and family support, and community resources may be discussed while developing the care plan.



Elisabeth Barre, Registered Nurse – Elisabeth is an RN who triages clinical concerns and assists families with coordinating the patient’s healthcare needs. She conducts Annual Wellness Visits.



Kalisha Bonds Johnson, Nurse Practitioner - Kalisha has a Doctor of Philosophy from Oregon Health & Science University. As a Nurse Practitioner she specializes in geriatric psychiatry and has expertise in depression, anxiety, and other mood disorders and behavioral or psychological symptoms of dementia.



Kari Burdzinski, Nurse Practitioner – Kari is a nurse practitioner who specializes in geriatrics with experience in Alzheimer's disease and dementia, primary care of older adults, and community based palliative care. She will be providing primary care to patients at the IMC.



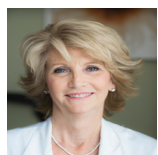
Cotenna Clark, Nurse Practitioner-- Cotenna is a Family Nurse Practitioner with experience in the primary care of older adults. She is the Nurse Practitioner for the IMC Community Program and supports the IMC Clinic.



Carolyn Clevenger, Clinical Director & Nurse Practitioner – Carolyn has a Doctor of Nursing Practice from the Medical College of Georgia. As a nurse practitioner, she specializes in geriatrics and Alzheimer’s disease and related disorders. She sees patients for primary care in the IMC.



Jenny Gay, Clinical Social Worker – Jenny is a licensed clinical social worker who communicates with patients and caregivers to assess needs, coordinate care, and plan for future needs.



Debbie Gunter, Nurse Practitioner– Debbie is nurse practitioner whose specialty is palliative care and geriatrics. She provides primary care to patients at the IMC.



Theodore (Ted) Johnson II, Collaborating Physician—Dr. Johnson is a geriatrician and the chair of Emory’s Department of Family and Preventive medicine. He does not see patients within the IMC, but he consults with the nurse practitioners.



Teerea Kimbro, IMC Program Coordinator – Teerea is a program coordinator who assists with new patient orientation, and administrative needs of the IMC.



Ambar Kulshreshtha, Collaborating Physician—Dr. Kulshreshtha is a Family Medicine Medical Doctor. He does not see patients within the IMC, but he consults with the nurse practitioners for the Community Program.



Laura Medders, Program Director – Laura is the IMC Program Director who communicates with patients and caregivers to assess needs, coordinate care, and plan for future needs.



Alison Schlenger, Nurse Practitioner – Alison is a nurse practitioner who specializes in geriatrics with experience in Alzheimer's disease and dementia, primary care of older adults, and community based palliative care. She will be providing primary care to patients at the IMC.

Not pictured: Michelle Becher, Lucy Goforth, Amber Stewart—Dementia Care Assistants, Elizabeth Beatty – Registered Nurse, Leondria Rahming—Medical Assistant, Alane' Kendrick—Patient Care Coordinator, Dheeraj Chilamakuri