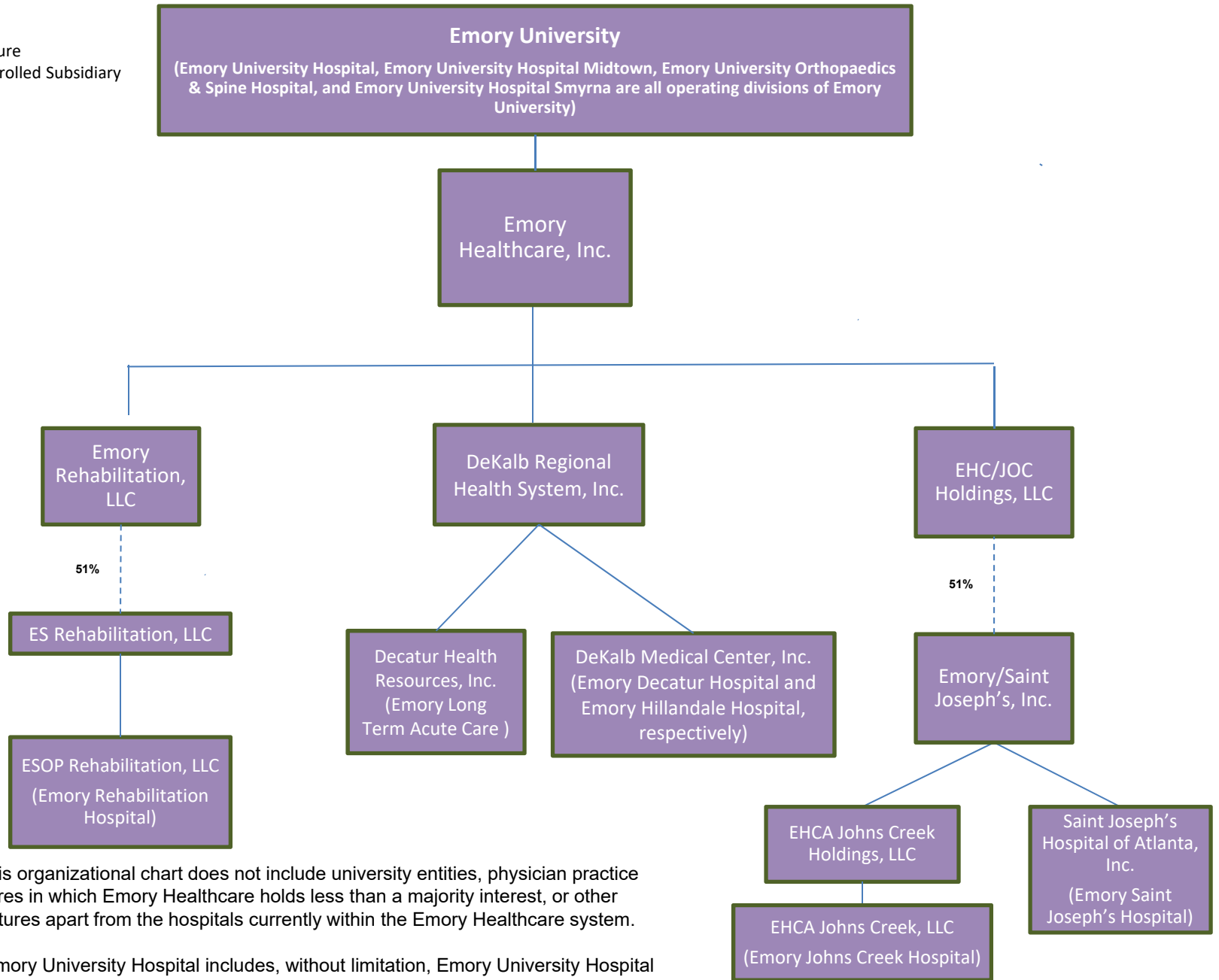


Dotted line – Joint Venture  
 Solid line – Wholly-Controlled Subsidiary



Please note that this organizational chart does not include university entities, physician practice entities, joint ventures in which Emory Healthcare holds less than a majority interest, or other entities or joint ventures apart from the hospitals currently within the Emory Healthcare system.

Please note that Emory University Hospital includes, without limitation, Emory University Hospital at Wesley Woods.

Please also note that this organizational chart does not indicate tax status, tax filings, or management agreements or arrangements.